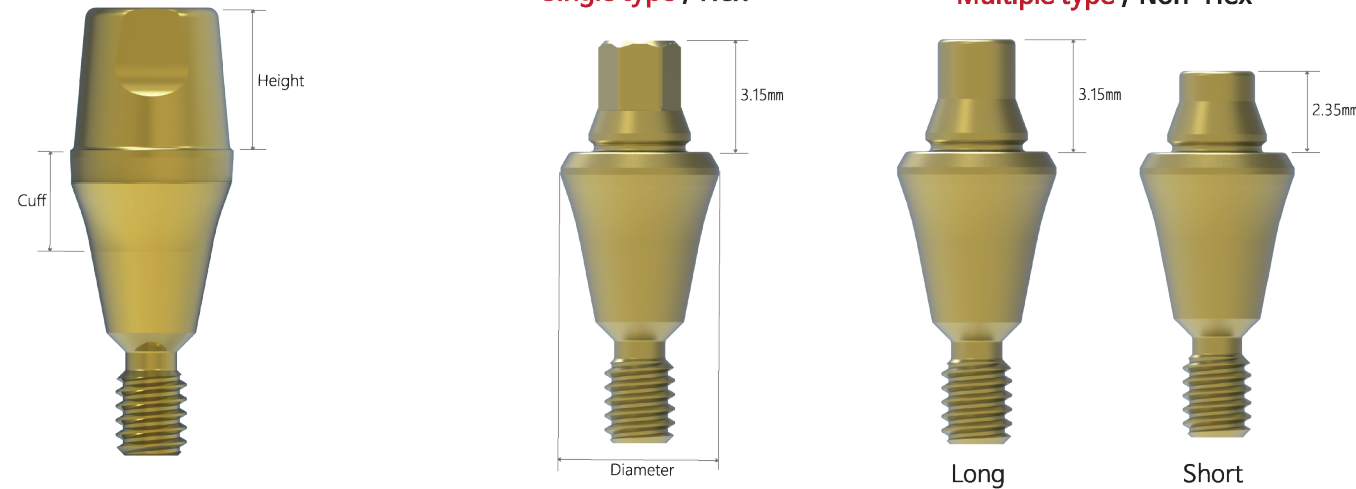


Products

Abutment



Submerged Internal type		Diameter	Cuff	Code	Submerged Internal type		Diameter	Cuff	Code
N	Single type Hex	R	ø4.5	1.5mm	S	Single type Hex	R	ø4.5	1.5mm
				2mm					2mm
				3mm					3mm
				4mm					4mm
				5mm					5mm
6mm	6mm								
N	Multiple type Non-Hex Short	R	ø4.5	1.5mm	W	Multiple type Non-Hex Short	W	ø5.5	1.5mm
				2mm					2mm
				3mm					3mm
				4mm					4mm
				5mm					5mm
6mm	6mm								
N	Multiple type Non-Hex Long	R	ø4.5	1.5mm	S	Multiple type Non-Hex Long	R	ø4.5	1.5mm
				2mm					2mm
				3mm					3mm
				4mm					4mm
				5mm					5mm
6mm	6mm								

* Connection
 - Narrow (2.1Hex) N
 - Standard (2.5hex) S

* Platform
 - Regular (ø4.5) R
 - Wide (ø5.5) W

* Cylinder Compatible Standard
 - Regular Platform ↔ Cylinder Diameter: ø4.6, ø5.0, ø5.5
 - Wide Platform ↔ Cylinder Diameter: ø6.0, ø6.5, ø7.0

* Use of Multiple type Short Abutment
 - Used when restoring multiple teeth: Compensation angle 15°

Products

Cylinder

Image	Diameter	Height	Code
	ø4.6	4.0mm	CFCA4640
		5.5mm	CFCA4655
		7.0mm	CFCA4670
R	ø5.0	4.0mm	CFCA5040
		5.5mm	CFCA5055
		7.0mm	CFCA5070
	ø5.5	4.0mm	CFCA5540
		5.5mm	CFCA5555
		7.0mm	CFCA5570
W	ø6.0	4.0mm	CFCA6040
		5.5mm	CFCA6055
		7.0mm	CFCA6070
	ø6.5	4.0mm	CFCA6540
		5.5mm	CFCA6555
		7.0mm	CFCA6570
ø7.0	4.0mm	CFCA7040	
	5.5mm	CFCA7055	
	7.0mm	CFCA7070	

Analog

Image	Diameter	Code
	R ø4.5	CFALA45
	W ø5.5	CFALA55

Tools

Image	Name	code	Purpose
	Abutment Driver (Single)	TATD21S, TATD21L	Tightening Abutment for Single type
	Abutment Driver (Multiple)	THD125S, THD125L	1.2Hex Driver, Tightening Abutment for Multiple type
	Cylinder Driver	TCCD4550, TCCD5560	Combine Cylinder
	Cylinder Removal Driver	TCRD16S, TCRD16L	Detach Cylinder
	Spring Repair Driver	TSRD	Restore the spring inside the cylinder
	Gingiva Gauge	TCFGTS20, TCFGTS40, TCFGTS60	Gum height measurement for abutment cuff

Healing Cap

Image	Diameter	Code
	R ø6.0	CFMHC45
	W ø7.0	CFMHC55

Impression Cap

Pick up type

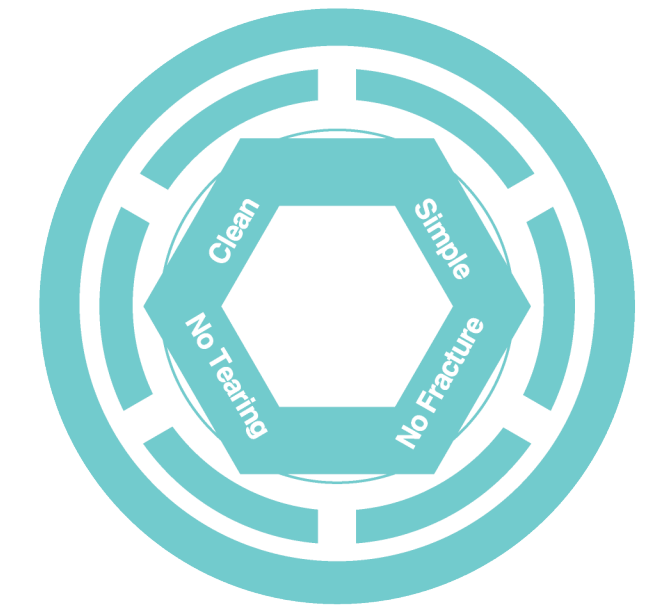
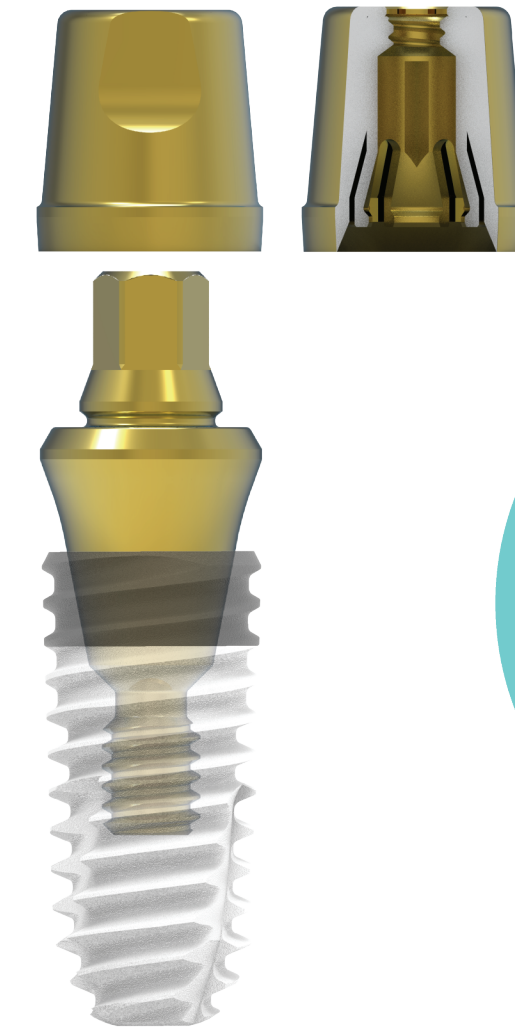
Image	Diameter	Code
	R ø4.5	CFPIC45
	W ø5.5	CFPIC55

Transfer type

Image	Diameter	Code
	R ø4.5	CFTIC45
	W ø5.5	CFTIC55



Click Fit System



New Paradigm



SIMPLE Implant Prosthetic System



With a single "CLICK", Worries are all gone.

Click Fit System

The crown can be fastened with a single "CLICK" without using screws and cement with a Click joint method. The titanium spring inside the cylinder is combined with the abutment with a force of 60N/cm, so it does not detach during function. It can be easily separated by Crownejector (if there is no hole in the crown) or Removal Driver (if there is a hole in the crown)

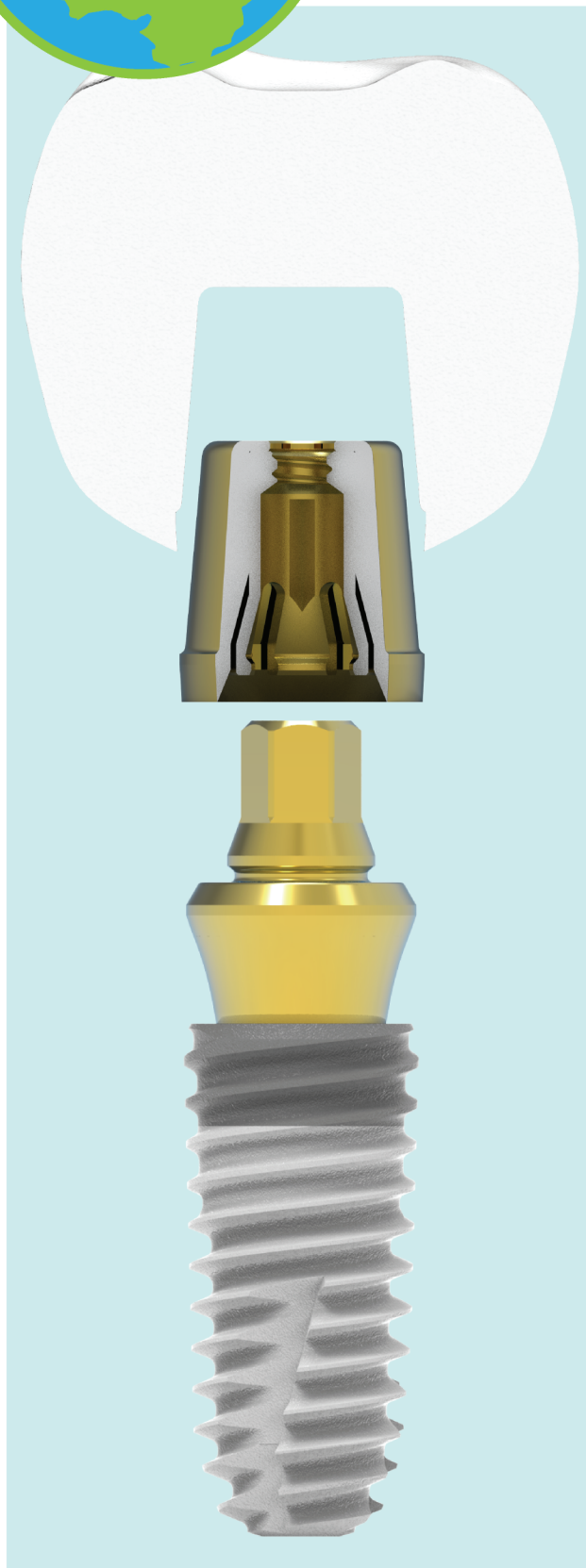
Simple Procedure

From taking impressions to setting crowns, the entire process of implant prosthesis is very simple, greatly reducing chair time. It takes a lot of time for implant treatment.

- Very easy Pick up Impression coping and Healing Cap to be fastened with "click"
- Same process as cement maintenance prosthesis and convenient digital process
- Easy to fit final prosthetics with "click"
- It is free to detach prosthetics, so it is easy to remove remaining cement
- The point where the prosthesis is connected becomes the gum level

Simple Maintenance

It is very effective for repair of prostheses, removal of residual cement, treatment of peri-implantitis, and regular check-ups because crown detachment is simple. There are no problems with screws and cement, reducing the worry of implant A/S. When maintaining the prosthesis, the abutment is fixed with the fixture, and only the crown is detached. The dual structure of the Abutment (combined with Fixture) and Cylinder (combined with crown) prevents Tearing of Fixture by distributing stress under excessive mastication.

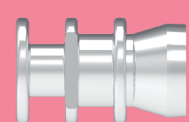


Metal Healing Cap



Abutment protection and Prevention of Tissue Growth

Impression Cap

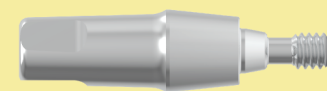


Pick up Impression

Carrying Plug



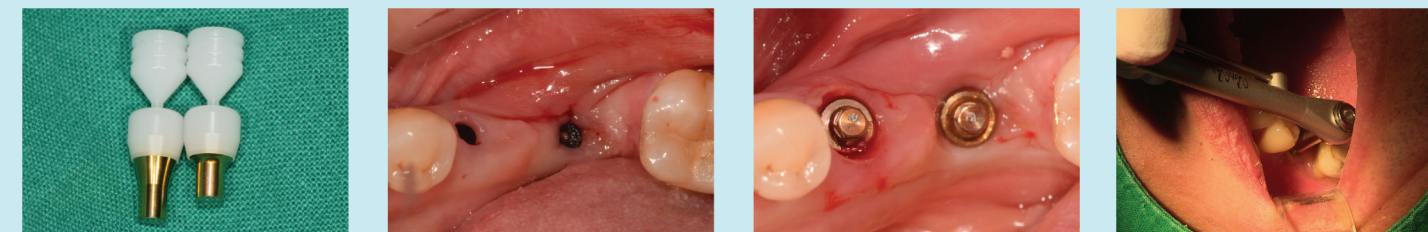
Gingiva Gauge



measuring the height of the gums For Abutment cuff selection

Manual

Click Fit Impression

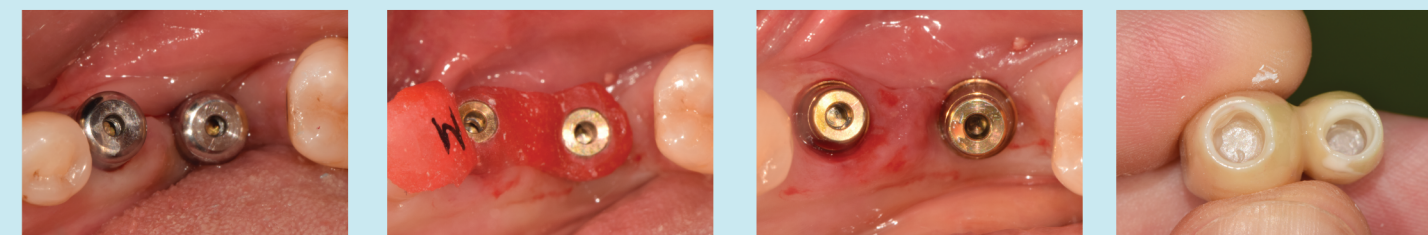


1. When connecting the abutment, it is easily connected to the intraoral fixture by hand using a carrying plug.
2. After separating the carrying plug, fasten the abutment at 35N/cm using a torque wrench.



3. Simply fasten the Impression Cap with a single "click". Coping agreement confirmed by "click".
4. Pick-up impression that does not need an open tray is possible, so it is very Simple and accurate impression taking is possible

Crown Setting



1. Removal of Healing Cap
2. easy cylinder fastening by "Click"
3. cement permanent bonding



4. Detach prosthetics with an Ejector or Removal Driver depending on the presence of a crown hole, and easily remove the remaining cements from the gums and prosthetics
5. Easily reposition the prosthesis with a single "click"

The whole process of prosthesis is very simple and accurate.

YouTube Search for "click fit".